

SG NDT's Innovative Solution for Near-Field Testing

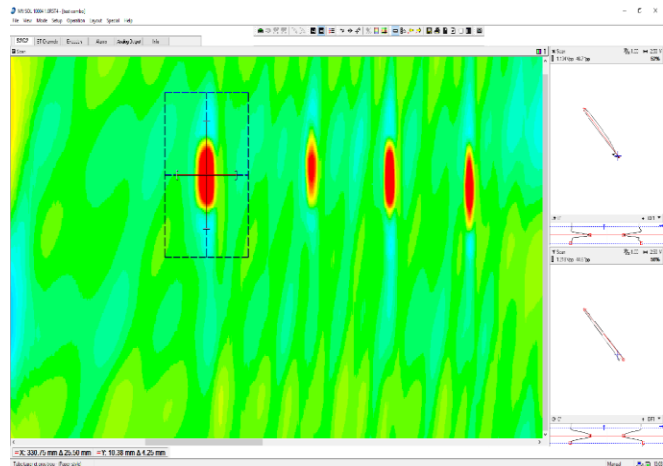
TECHNICAL ATTRIBUTES

Near-Field Array uses more coils than conventional Near Field Probe to provide more accuracy with small defects. The C-Scan imaging makes detection even more intuitive with saturated colors.

SG NDT's NFA probe can detect defects inside fin-fair cooler tubes and heat exchangers which includes pitting, wall loss, axial cracking and more.



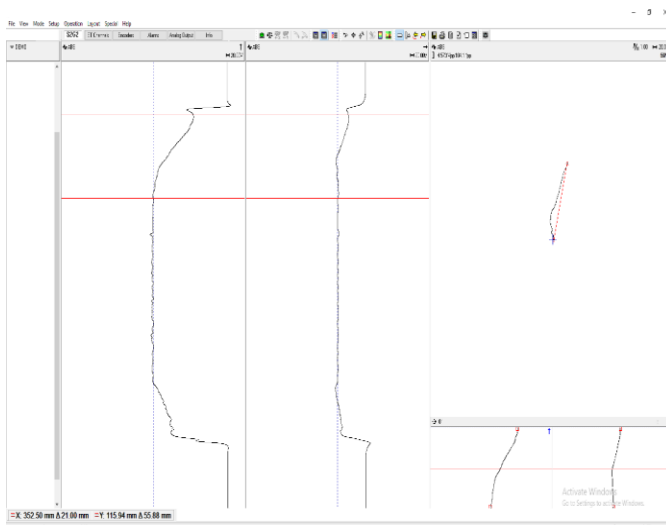
Unlike a Magnetic Flux Leakage probe, the NFA probe uses no magnets which makes pushing and pulling through tubes effortless.



ARRAY BENEFIT

Our Near Field Array probe can hold up to 32 coils plus an absolute channel for easy detection and sizing of tube end taper corrosion.

The multiplexer is embedded inside the probe, close to the coils, which drives them to their full potential at a scan speed of up to 12 in/s (300 mm /s).



Our probes come in various diameters to cover all the potential tube sizes. SG NDT's NFA probe utilizes the industry standard 41-Pin connector.

For more information, contact us.